

VICINITY MAP
NOT TO SCALE

LEGEND

⊕ F.H.	FIRE HYDRANT
⊙ X SET	CHISELED "X" SET
⊙ F.X.	CHISELED "X" FOUND
⊙ I.R.	IRON ROD FOUND (SIZE AS NOTED)
⊙ S.I.R.	IRON ROD SET (SIZE AS NOTED)
⊙ O.U.P.	OVERHEAD UTILITY POLE W/ GUY
⊙ U.E.	UNDERGROUND ELECTRIC OR TELEPHONE
⊙ L.P.	LIGHT POLE
⊙ SSMH	SANITARY SEWER MANHOLE
⊙ G.C.	SAN. SWR. CLEAN OUT
⊙ G.V.	GAS VALVE
⊙ W.V.	WATER VALVE
⊙ T	TREE
⊙ M.H.	MANHOLE (TYPE AS NOTED)
⊙ T.S.B.	TRAFFIC SIGNAL BOX
⊙ T.E.B.	ELECTRIC TRANSFORMER BOX
⊙ T.S.T.	ELECTRIC TRANSMISSION STEEL TOWER
⊙ C.M.	UNDERGROUND CABLE MARKER
⊙ SGN	SIGN

---	PROP. LANDSCAPE AREAS
---	EXIST. STORM SEWER
---	EXIST. SANITARY SEWER
---	EXIST. WATER
---	EXIST. GAS
---	PROP. SANITARY SEWER
---	PROP. WATER
---	PROP. STORM SEWER

SITE DATA

BUILDING 1

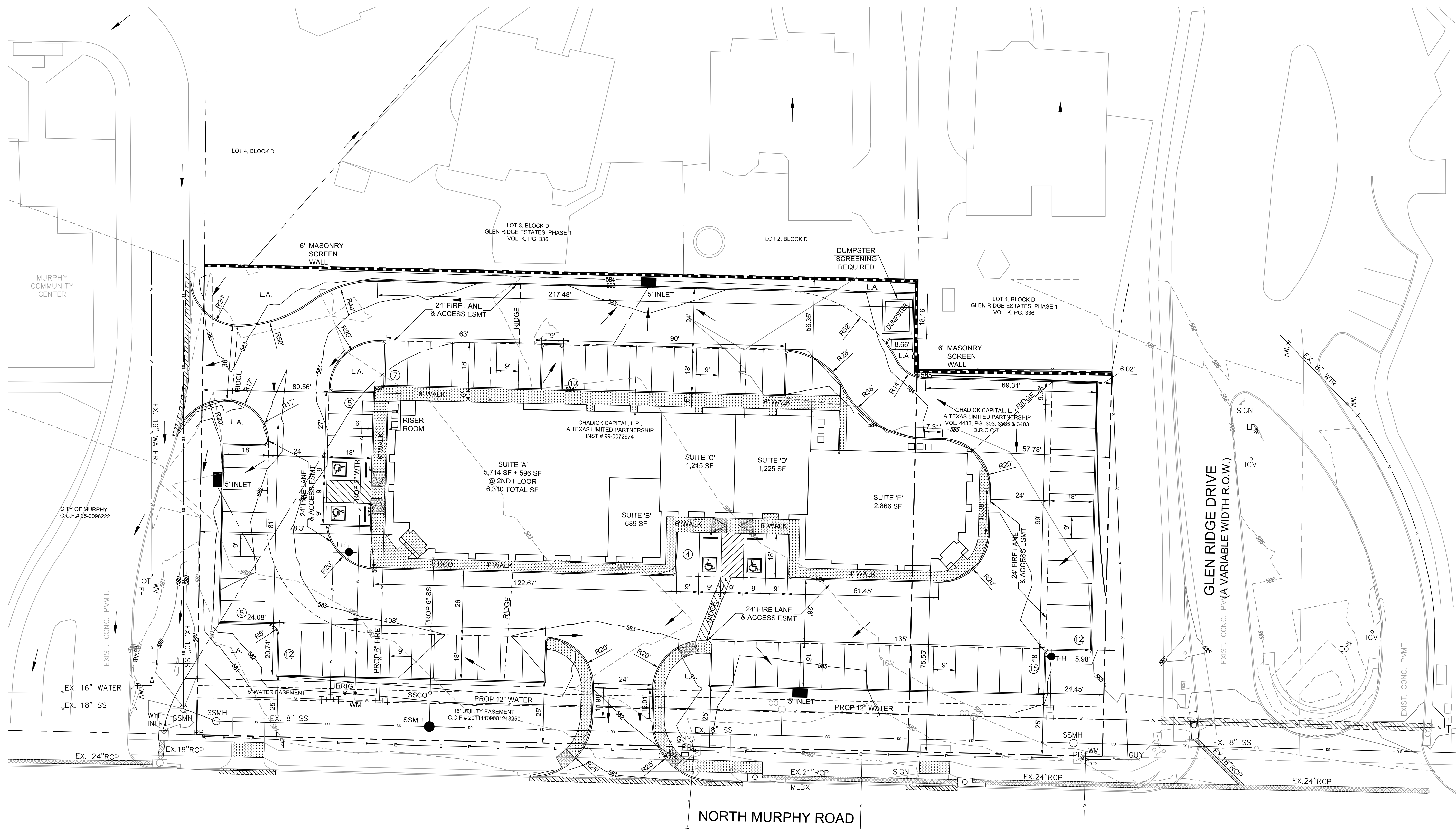
BUILDING SF 12,325 TOTAL
 BUILDING COVERAGE: 33%
 BUILDING HEIGHT 25'-7" FT.

PARKING REQUIRED

MEDICAL OFFICE STE. A
 1:150 SF (6,310 SF), 42 SPACES

PROFESSIONAL OFFICES
 STE. B, C, D & E
 1:200 SF (6,015 SF), 30 SPACES

TOTAL PROVIDED - 73 SPACES
 TOTAL REQUIRED - 72 (4 HC SPACES)



SITE PLAN
 ANDERSON MEDICAL-PROFESSIONAL OFFICES

OWNER:
ANDERSON IHL, LLC
 LUKE ANDERSON
 130 W BALLARD AVE
 WYLIE, TEXAS 75098

1.55 ACRE TRACT
 GEORGE H. PEGUES, ABSTRACT NO. 699
 CITY OF MURPHY, COLLIN COUNTY, TEXAS

BENCHMARK:
 X CUT ON TOP OF INLET, WEST SIDE OF MURPHY ROAD, NORTH CR
 OF DRIVEWAY TO MURPHY RECREATION CENTER
 ELEV. 580.21

ENGINEERINGCONCEPTS & DESIGN, L.P.

ENGINEERING / PROJECT MANAGEMENT /
 CONSTRUCTION SERVICES - FIRM REG. #F-001145
 201 WINDCO CIR, STE 200, WYLIE, TX 75098
 972-941-8400 FAX: 972-941-8401 WWW.ECDLP.COM

REVISIONS:

DRAWN: TONY
 CHECKED: T
 PROJECT NO.:
 DWG FILE NAME:

"THIS DOCUMENT IS RELEASED FOR THE PURPOSE OF INTERIM REVIEW
 ON THE DATE OF CITY OF MURPHY INTERMEDIATE REVIEW
 IT IS NOT TO BE USED FOR CONSTRUCTION, BIDDING, PERMIT PURPOSES."

SITE PLAN
 AN ANDERSON MEDICAL PROFESSIONAL OFFICES
 CITY OF MURPHY
 COLLIN COUNTY, TEXAS

SHEET

 OF